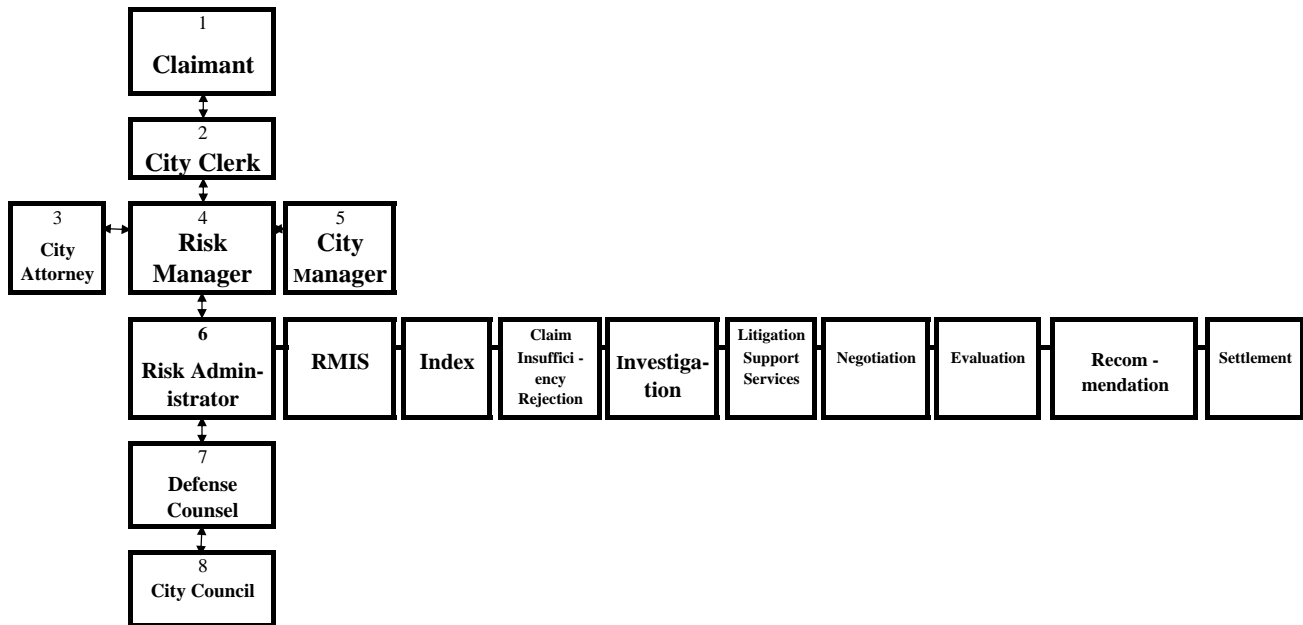


CLAIMS PROCESS FOR THE CITY OF PETALUMA



- 1 Claimant Must obtain claim form from City Clerk; completes and submits claim
- 2 City Clerk Receives claim; logs claim; forwards to Risk Manager

If you are submitting a Claim to the City of Petaluma, please obtain the Claim Form from the City Clerk's office, then complete the form and return it to the City Clerk's Office. Thank you for your assistance and cooperation in this claims process.