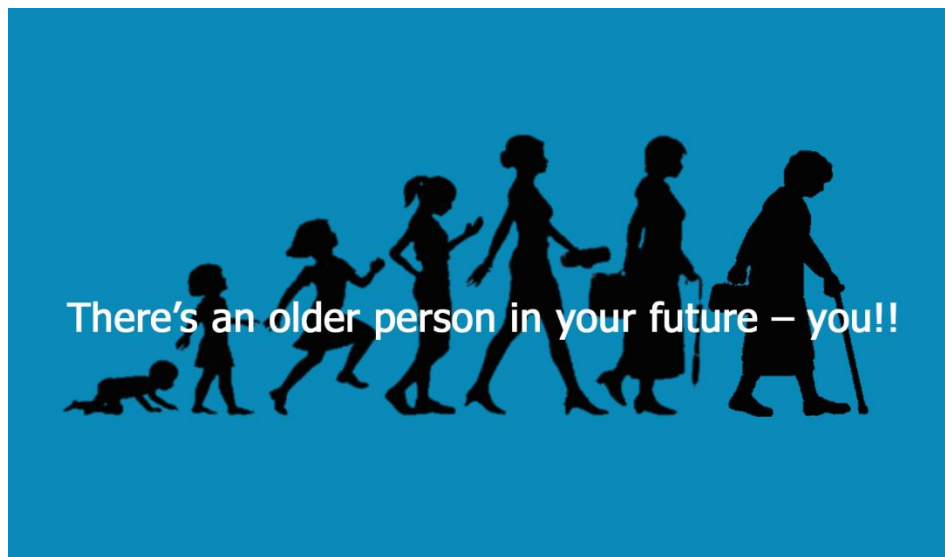




What's an Age-Friendly Community? Can Petaluma Become One?

Tuesday March 6th at 7pm at Aqus Cafe



Age-friendly communities foster health, security, mobility, and participation at every stage of life. What does that mean? What could that look like in Petaluma?

Come hear Renee Tolliver, the coordinator for Age-Friendly Sonoma County – part of a world-wide movement that's creating communities where it's great to grow up *and* grow old.

Petaluma already has innovative programs that benefit people across the lifespan – but can we do more? The City Council has put planning and implementing age-friendly community strategies on their list of priorities – and we're one of just four Sonoma cities that has a Senior Advisory Committee. Come and get in on the ground floor of a grass roots effort that is good for all ages! There will be time for questions and comments.

Questions? Email Senior Advisory Committee Chair Kris Rebillot at krebillot@rebillot.com