



Water Pollution Prevention



Tips for Fund Raiser Car Wash and Water Pollution Prevention

How to Sponsor a Fund Raiser Car Wash that Protects Our Creeks and the Petaluma River.

This handout is intended to explain water quality issues regarding the discharge of car wash water from fundraisers and to provide guidelines to be followed when hosting a car wash.

Can a car wash pollute our creeks?

During a car wash fundraiser, wash water containing detergents (even if it is bio-degradable), residue from exhaust fumes, brake pads, gasoline, and motor oil washes off the cars and flows off the pavement into nearby storm drains and into our creeks and the Petaluma River. The run-off is a pollutant; it can be harmful to fish and other aquatic life that depend on clean water for their survival.



Is discharge of car wash water to the storm drain system prohibited?

Yes. Section 15.80.060 of the City of Petaluma's Storm Water Management and Discharge Control Ordinance prohibits discharging waters containing any pollutants that cause or contribute to a violation of applicable water quality standards to the City's storm water system or watercourses. (*Individual residential car washing is exempt*).



Before beginning your fund raiser car wash:

- Hold a meeting with all participants to explain the proper procedures that should be followed when conducting these activities.
- Remove all trash and debris from the car washing area.
- Use only soaps, cleaners, or detergents that are labeled: "non-toxic," "phosphate free," or "biodegradable." The safest products for the environment are vegetable-based or citrus-based soaps.
- Do not use acid based wheel cleaners or engine degreasers.
- Select sites where the wash water can soak into grass, gravel, or be diverted to nearby landscaping. This will allow the wash water to filter through the vegetation and /or soil instead of flowing directly into a storm drain.
- If you select a site that drains into a street, block off the storm drain with sandbags (coordinate with the



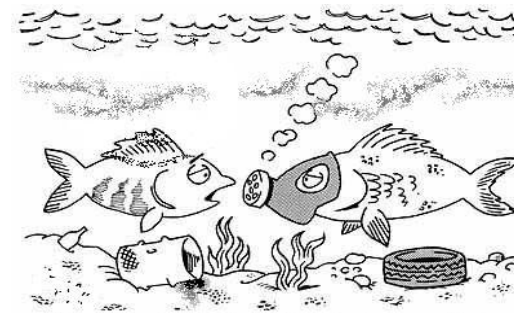
Department of Water Resources and Conservation) and either divert the wash water to an area where the water can pool and evaporate throughout the day or arrange to dispose of the wash water into a sanitary sewer drain (with permission from the Department of Water Resources and Conservation, 778-4546).

We can make a difference.....

Clean and healthy creeks, rivers, and bays are important to our community. However, many common activities can lead to water pollution if you're not careful. Wash water containing heavy metals, break dust, soaps and solvents can be washed into storm drains that flow to the Petaluma River and eventually into the San Pablo Bay. Unlike water in sanitary sewers (from sinks and toilets), water in storm drains is not treated before entering our waterways.

You would never put soaps and solvents into the River, so don't let them enter storm drains.

Follow these easy tips to help prevent water pollution.



Hey Fred, what did the doctor say?

The tips contained in this brochure are intended to provide useful information to help prevent water pollution.



For additional Information Concerning Storm Water Pollution Prevention contact:

Department of Water Resources and Conservation
202 North McDowell Boulevard
Petaluma, CA 94954

Tel. (707) 778-4546 Fax. (707) 778-4508

E-mail: stormwater@ci.petaluma.ca.us

To report a discharge violation
please call (707) 778-4546



Remember... Only Rain ... Down the Drain !